

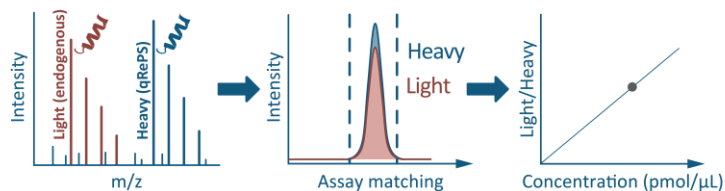
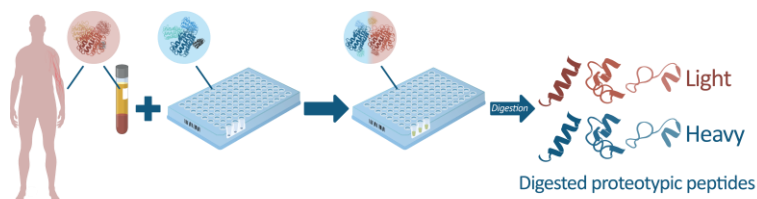
Product Specifications

Product Name	LiverEdge
Product Number(s)	LE3901-8 / LE3901-48 / LE3901-96
Product Description	Quantitative recombinant protein standards (qRePS™) for multiplexed absolute quantification of blood plasma proteins using mass spectrometry. Heavy Lys and Arg ¹³ C and ¹⁵ N labeled protein standards targeting 39 different human proteins.
Species	Human
Application	MS-based quantitative proteomics in blood plasma.
Included Proteins	See next page
Expression host	<i>Escherichia coli</i>
Purification	IMAC purification
Quantification	Absolute quantification using a reference sample
Isotopic incorporation	>99.9% as determined by LC-MS/MS
Amounts per well	Each well contains protein amounts for digestion of 1µl human blood plasma or diluted equivalent.
Unit size(s)	8 / 48 / 96 wells
Format	Dry powder
Storage	Long term; -20°C. Short term (up to 30 days); +25°C
Shipping	Shipped at ambient temperature.
Notes	For protocols, additional product information etc. visit www.proteomedge.com Optimal conditions should be determined by the end user.

Product of Sweden. For research use only.

Not intended for pharmaceutical development, diagnostic, therapeutic or any in vivo use. Products from ProteomEdge may not be resold, modified for resale or used to manufacture commercial products without prior written approval from ProteomEdge AB.

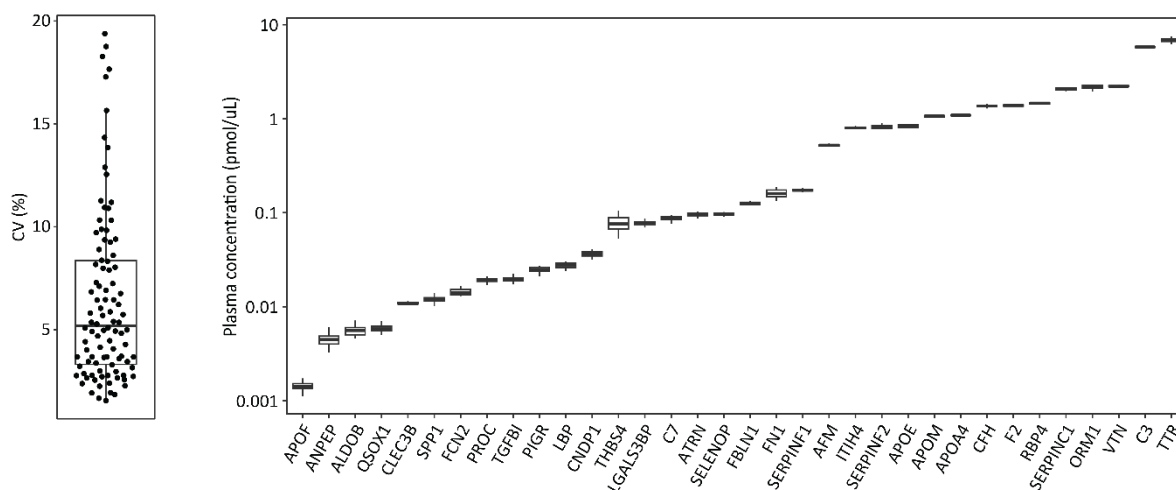
Terms & Conditions as available on www.proteomedge.com/terms applies



Absolute quantification workflow starts by an addition of blood plasma samples to the qRePS panel assuring precise and accurate absolute quantification.

ProteomEdge™ is bringing precision into absolute quantification of blood plasma proteins with multiplex panels of Quantitative Recombinant Protein Standards – qRePS. They are enzymatically cleavable internal standards ensuring accurate and precise multi-peptide quantification in MS-based proteomics experiments. Each panel of qRePS is distributed pre-aliquoted and dried in a 96-well plate for easy handling and seamless absolute quantification. All product plates are designed for analysis of an equivalent of 1 µL raw blood plasma that is typically diluted and pipetted on top of a qRePS panel as a first step of sample preparation followed by standard proteomics workflow and digestion ensuring unmet accuracy and precision.

The LiverEdge panel has been evaluated on 24 biological replicates using TSQ Altis (Thermo) at a sample turnover of 50 samples/day, showing CV of 5.2%.



Reproducibility in absolute quantification of 24 biological replicates using LiverEdge with CV=5.2%.

Targets included in LiverEdge

Gene Name	UniProt	Gene Name	UniProt	Gene Name	UniProt	Gene Name	UniProt
ADIPOQ	Q15848	C7	P10643	FN1	P02751	SELENOP	P49908
AFM	P43652	CFH	P08603	ITIH4	Q14624	SERPINC1	P01008
ALDOB	P05062	CLEC3B	P05452	LBP	P18428	SERPINF1	P36955
ANPEP	P15144	CNDP1	Q96KN2	LGALS3BP	Q08380	SERPINF2	P08697
APOA4	P06727	COL1A1	P02452	ORM1	P02763	SPP1	P10451
APOE	P02649	CST3	P01034	PEPD	P12955	TGFBI	Q15582
APOF	Q13790	DPP4	P27487	PIGR	P01833	THBS4	P35443
APOM	O95445	F2	P00734	PROC	P04070	TTR	P02766
ATRN	O75882	FBLN1	P23142	QSOX1	O00391	VTN	P04004
C3	P01024	FCN2	Q15485	RBP4	P02753		