

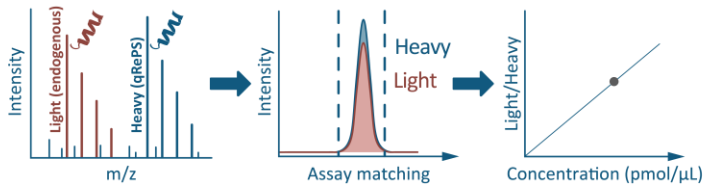
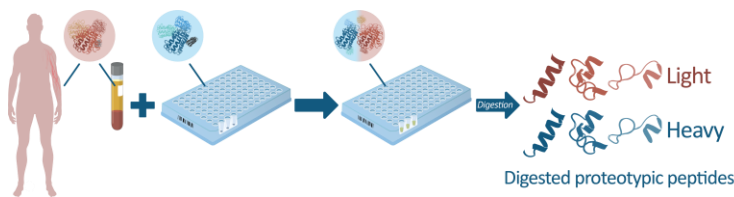
Product Specifications

Product Name	ApoEdge™
Product Number(s)	AE1801-8 / AE1801-48 / AE1801-96
Product Description	Quantitative recombinant protein standards (qRePS™) for multiplexed absolute quantification of blood plasma proteins using mass spectrometry. Heavy Lys and Arg ¹³ C and ¹⁵ N labeled protein standards targeting 18 different human proteins.
Species	Human
Application	MS-based quantitative proteomics in blood plasma.
Expression host	<i>Escherichia coli</i>
Purification	IMAC purification
Quantification	Absolute quantification using a reference sample
Isotopic incorporation	>99.9% as determined by LC-MS/MS
Amounts per well	Each well contains protein amounts for digestion of 1µl human blood plasma or diluted equivalent.
Unit size(s)	8 / 48 / 96 wells
Format	Dry powder
Storage	Long term; -20°C. Short term (up to 30 days); +25°C
Shipping	Shipped at ambient temperature.
Notes	For protocols, additional product information etc. visit www.proteomedge.com Optimal conditions should be determined by the end user.

Product of Sweden. For research use only.

Not intended for pharmaceutical development, diagnostic, therapeutic or any in vivo use. Products from ProteomEdge may not be resold, modified for resale or used to manufacture commercial products without prior written approval from ProteomEdge AB.

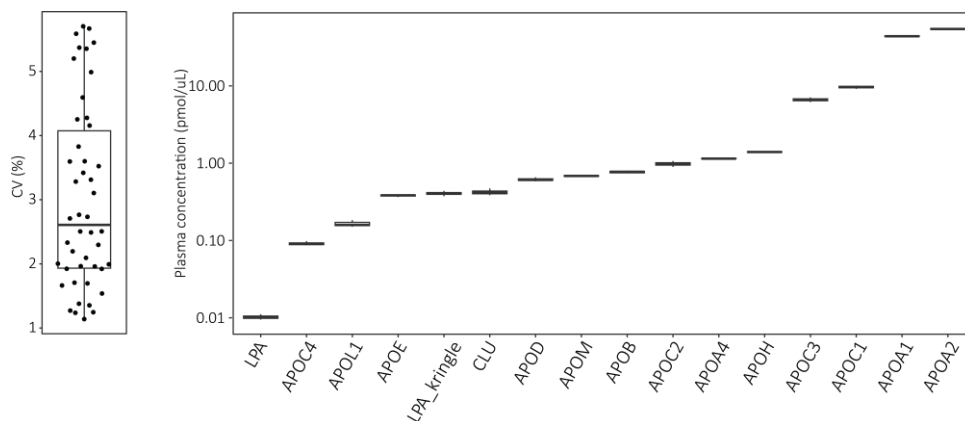
Terms & Conditions as available on www.proteomedge.com/terms applies



Absolute quantification workflow starts by an addition of blood plasma samples to the qRePS panel assuring precise and accurate absolute quantification.

ProteomEdge™ is bringing precision into absolute quantification of blood plasma proteins with multiplex panels of Quantitative Recombinant Protein Standards – qRePS. They are enzymatically cleavable internal standards ensuring accurate and precise multi-peptide quantification in MS-based proteomics experiments. Each panel of qRePS is distributed pre-aliquoted and dried in a 96-well plate for easy handling and seamless absolute quantification. All product plates are designed for analysis of an equivalent of 1 μ L raw blood plasma that is typically diluted and pipetted on top of a qRePS panel as a first step of sample preparation followed by standard proteomics workflow and digestion ensuring unmet accuracy and precision.

The ApoEdge™ panel has been evaluated on 24 biological replicates using TSQ Altis (Thermo) at sample turnover of 50 samples/day, showing CV of 2.6%.



Reproducibility in absolute quantification of 24 biological replicates using ApoEdge with CV=2.6%.

Targets included in ApoEdge

Gene Name	UniProt ID	Gene Name	UniProt ID
APOA1	P02647	APOD	P05090
APOA2	P02652	APOE	P02649
APOA4	P06727	APOF	Q13790
APOA5	Q6Q788	APOH	P02749
APOB*	P04114	APOL1	O14791
APOC1	P02654	APOL4	Q9BPW4
APOC2	P02655	APOM	O95445
APOC3	P02656	CLUS	P10909
APOC4	P55056	LPA**	P08519

*Standard for APOB covering both APOB48 and APOB100

**Includes two standards for LPA to cover both kringle repeats and the unique LPA region